

## BASIC

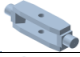
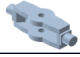
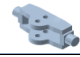



### Características Técnicas / Technical data

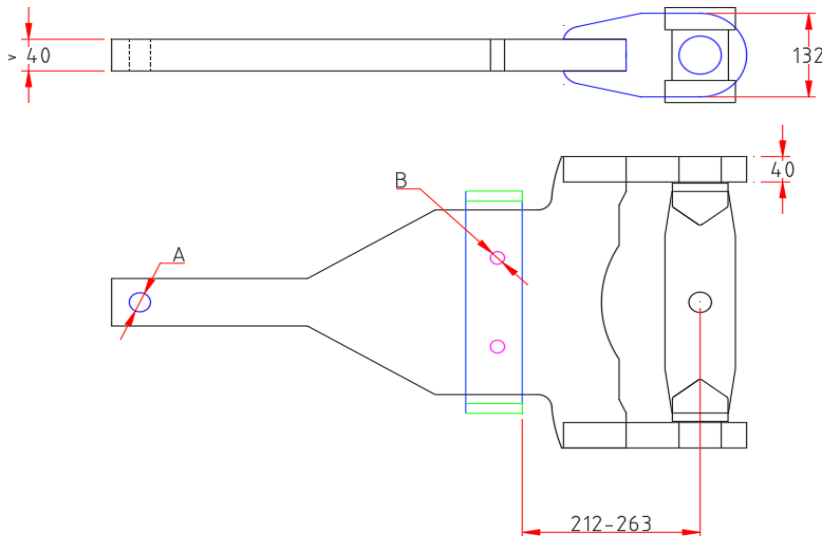
Denominación / Denomination	1126	BASIC
Tipo / Type		
Carga vertical / Vertical load	2.300 kg /	2.254 dN
Carga Horizontal / Horizontal Load	24.000 kg /	24,00 t

### Modelos admitidos / Supported Models


### Accesorios Normalizados / Standard Accessories (\*)

ID	Denominación / Denomination	Imagen/Image	Observaciones/Observations
PFDS	Petaca oscilante fija doble Double Swinging drawbar fixed		Diametro bulón < 40 mm Diameter pin < 40 mm
PFDR	Petaca fija doble Reforzada Double Swinging drawbar fixed and reinforced		Diametro bulón > 40 mm Diameter pin > 40 mm
PFDD	Petaca oscilante fija doble descentrada Double Swinging drawbar fixed and off-centre		Diametro bulón < 40 mm Diameter pin < 40 mm
PETB80	Petaca Bola fija		

### Plano y medidas / Plan and measures



### Observaciones / Observations

(\*) Para realizar el pedido indicar la referencia del enganche y el código de la petaca seleccionada. Para otras petacas o accesorios contactar con CELMA EJE A  
 (\*) To order specify the model of coupling and the code of the selected drawbar. For other drawbar types or accessories contact CELMA EJE A