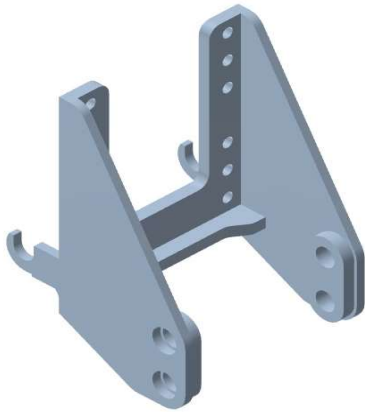







**1603C Rex**

**Características Técnicas / Technical data**

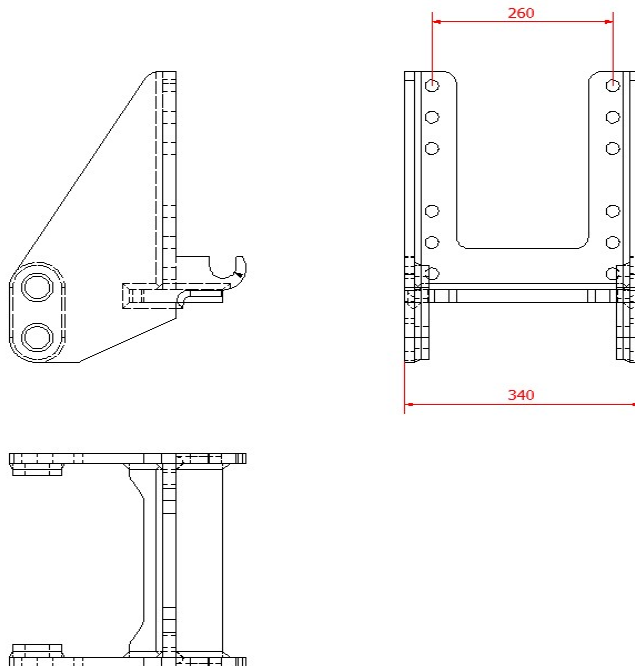
<b>Denominación / Denomination</b>	1133	1603C
<b>Tipo / Type</b>	Corredera / Slide	
<b>Carga vertical / Vertical load</b>	3.000 kg /	2.943 dN
<b>Carga Horizontal / Horizontal Load</b>	21.000 kg /	21,00 t

**Modelos admitidos / Supported Models**

Landini Rex (80-105)  
Mc Cormick F95

**Accesorios Normalizados / Standard Accessories (\*)**

ID	Denominación / Denomination	Imagen/Image	Observaciones/Observations
PCDS	Petaca oscilante corredera doble Double Swinging drawbar slide		Diametro bulón < 40 mm Diameter pin < 40 mm
PCDR	Petaca corredera doble Reforzada Double Swinging drawbar slide and reinforced		Diametro bulón > 40 mm Diameter pin > 40 mm
PCDD	Petaca oscilante corredera doble descentrada Double Swinging drawbar slide and off-centre		Diametro bulón < 40 mm Diameter pin < 40 mm
ADBO80	Adaptador de bola 80 mm 80mm ball Adapter		
ADCLAV	Adaptador de clavija Bolt Adapter		

**Plano y medidas / Plan and measures**

**Tornillería / Bolts**

Tipo /Type	Ud/Ut	Material/Material
M16x50 P200	12	12.9

**Observaciones / Observations**

(\*) Para realizar el pedido indicar la referencia del enganche y el código de la petaca seleccionada. Para otras petacas o accesorios contactar con CELMA EJE A  
 (\*) To order specify the model of coupling and the code of the selected drawbar. For other drawbar types or accessories contact CELMA EJE A