

TIPOS DE ENGANCHE:

1404UF








1 POSICION - FIJO

1404UC

4 POSICIONES-CORREDERA



Características Técnicas / Technical data

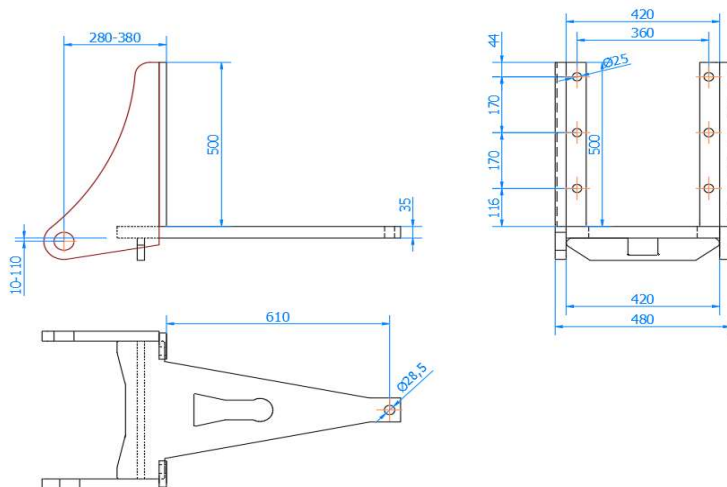
| Fijo / Fixed | | | Corredera / Slide | | |
|--------------------------------|------------------------------------|--|--------------------------------|------------------------------------|--|
| Carga vertical / Vertical load | Carga Horizontal / Horizontal Load | TIPO PETACA (*) | Carga vertical / Vertical load | Carga Horizontal / Horizontal Load | |
| 3000 Kg | 85,02 KN | P1LD  (1) | 3000 Kg | 85,02 KN | |
| 3000 Kg | 92,62 KN | P2LD  (1) | 3000 Kg | 92,62 KN | |
| 3000 Kg | 92,62 KN | P2LDD  (1) | 3000 Kg | 92,62 KN | |
| 3000 Kg | 92,62 KN | P1LND  (2) | Kg | KN | |
| 3000 Kg | 96,98 KN | P2LND  (2) | Kg | KN | |
| 3000 Kg | 96,98 KN | P2LNDD  (2) | Kg | KN | |
| 3000 Kg | 85,02 KN | PBD80  (3) | 3000 Kg | 85,02 KN | |

(*) TIPOS DE PETACA: (1) Desmontable / (2) No desmontable / (3) Bola Desmontable

Modelos admitidos / Supported Models

John Deere 7720, 7730, 7820, 7830, 7920, 7930

Plano y medidas / Plan and measures



Tornillería / Bolts

| Tipo /Type | Ud/Ut | Material/Material |
|-------------|-------|-------------------|
| M20x60 P250 | 6 | 12.9 |

Observaciones / Observations

(*) Para realizar el pedido indicar la referencia del enganche y el código de la petaca seleccionada. Para otras petacas o accesorios contactar con CELMA EJE A

(*) To order specify the model of coupling and the code of the selected drawbar. For other drawbar types or accessories contact CELMA EJE A